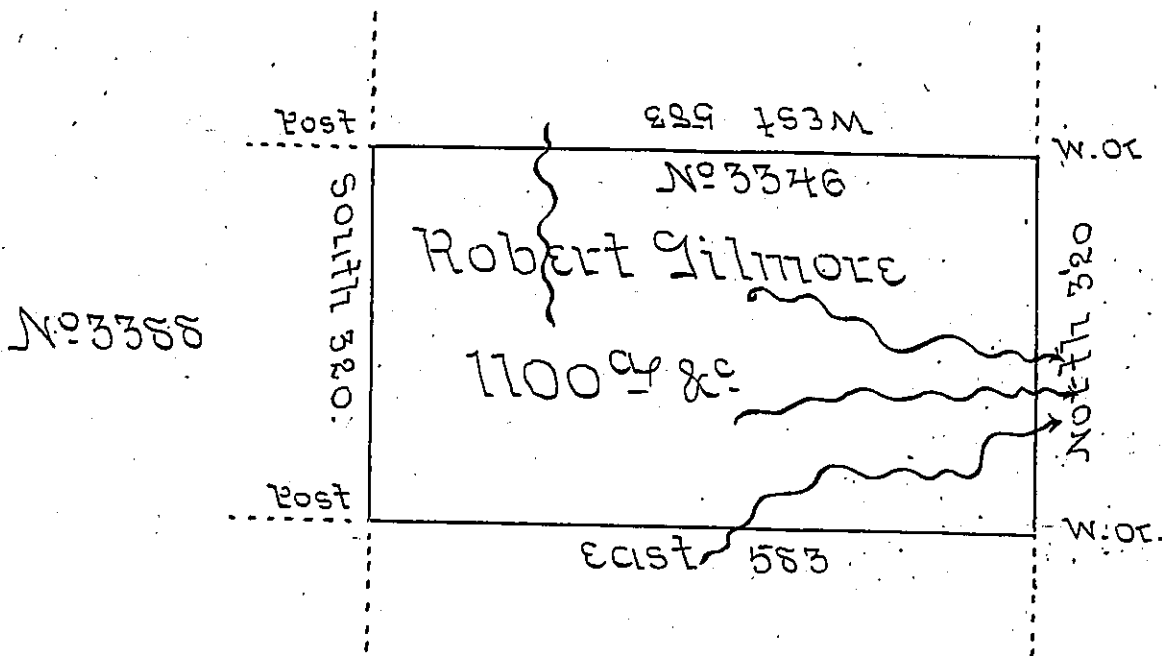


No 3348



No 3345

In pursuance of a Warrant No 3346 dated 14<sup>th</sup> Decem<sup>r</sup> 1792 sum<sup>d</sup> 7<sup>th</sup> day of Sept<sup>r</sup> 1793 to Rob<sup>t</sup> Gilmore the above described tract of land situate on the Waters of Sandy Lick Creek adjoining his other land in the late purchase, District No 6 - Containing Eleven hundred - Acres & the Allow<sup>e</sup> of six PCent &c

Emmon Williams Dep<sup>y</sup> SE

To Wm<sup>t</sup> Brodhead Esq<sup>r</sup> }  
 Surveyor General - }

IN TESTIMONY that the above is a copy of the original remaining on file in the Department of Internal Affairs of Pennsylvania, made conformably to an Act of Assembly approved the 16th day of February, 1833, I have hereunto set my Hand and caused the Seal of said Department to be affixed at Harrisburg, this sixteenth day of January 1905.

*Joseph R. Brown*  
 Secretary of Internal Affairs.